

# VALVES WITH THREADED CONNECTORS - TF SERIES - Ø 1 ½"



### FEATURES

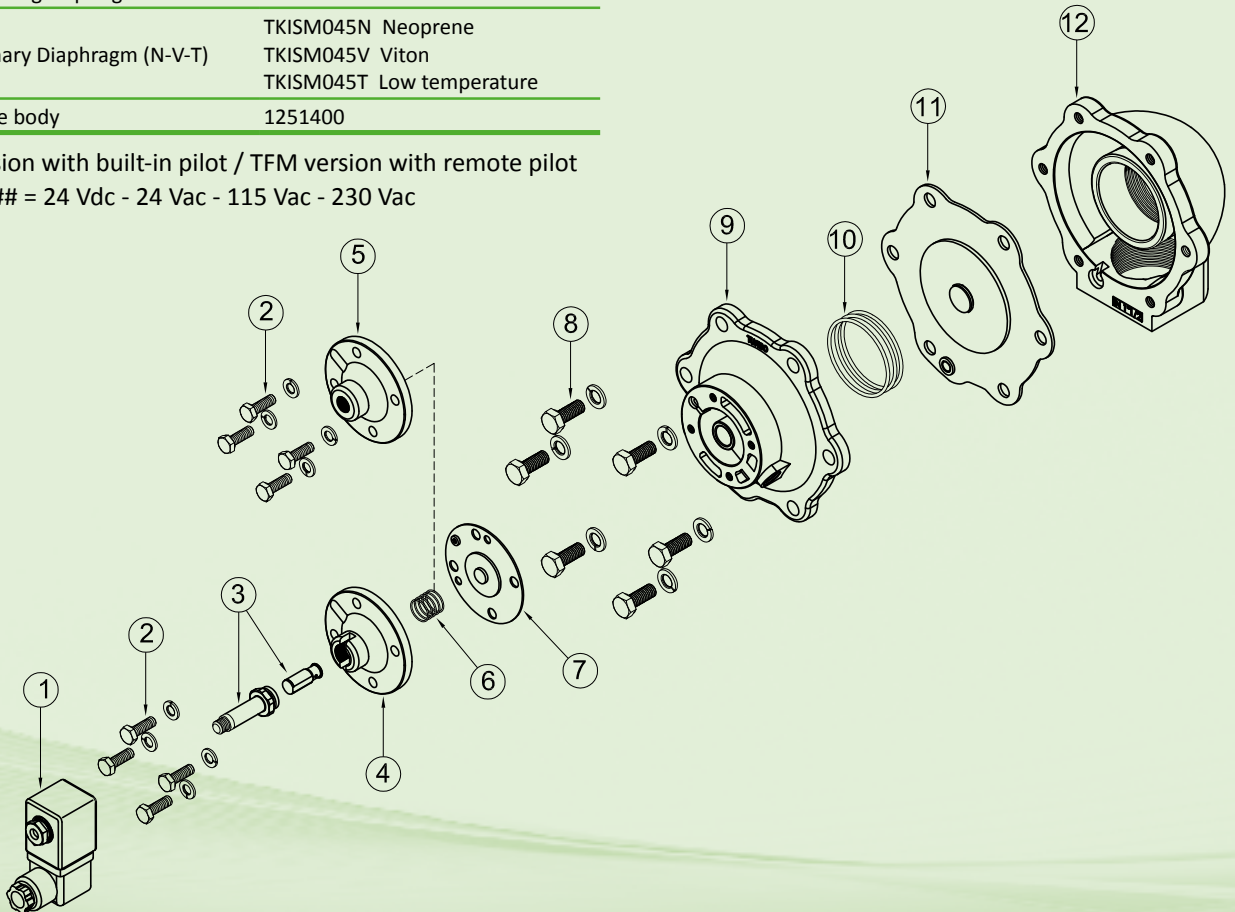
Fluids	Non-lubricated filtered air
Operating temperature	Neoprene diaphragm -20°C +80°C
	Viton diaphragm -20°C +200°C
	Low T. diaphragm -40°C; +80°C
Operating pressure	between 0.5 and 7.5 bar
Body and cover	Die-cast aluminium
Pilot core	Stainless steel
Screws and bolts	Stainless steel
Coil insulation	Class H
Connector	PG 9 EN175301-803
Connector + coil protection	IP65 EN60529
Standard voltage	24V/50-60Hz (±10%) 19VA
	115V/50-60Hz (±10%) 19VA
	230V/50-60Hz (±10%) 19VA
	24VDC (± 10%) 18 Watt

### DESCRIPTION

### TF045(N-V-T)P / TF045(N-V-T)M

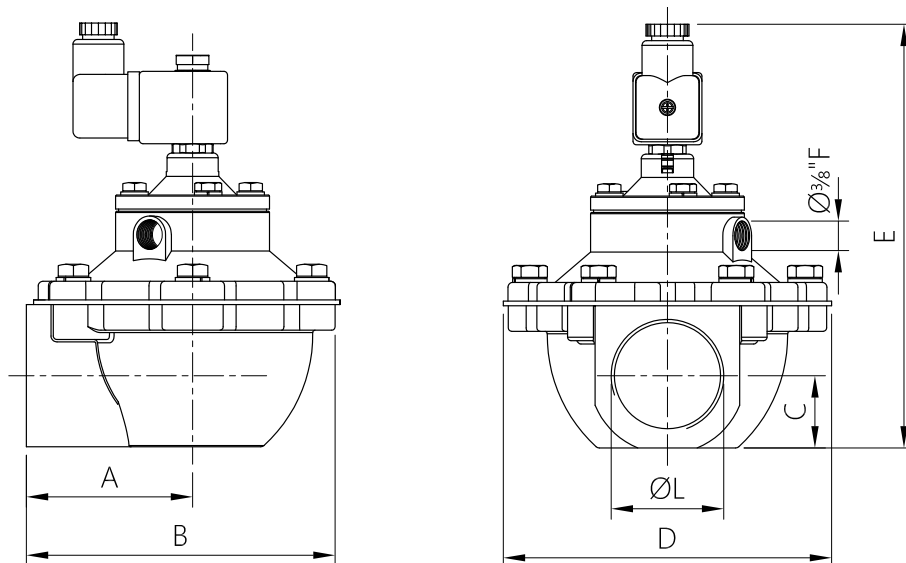
<b>1</b>	Coil - Connector	BH10 V## / V##
<b>2</b>	Screws - Washers	TKITVTE06X18X4
<b>3</b>	Pilot unit	1331080
<b>4</b>	Pilot cover	1251715
<b>5</b>	Remote cover	1251745
<b>6</b>	Diaphragm spring	3241006
<b>7</b>	Secondary diaphragm (N-V-T)	TKISM010N Neoprene
		TKISM010V Viton
		TKISM010T Low temperature
<b>8</b>	Screws - Washers	TKITVTE08X20X6
<b>9</b>	Cover	1251840
<b>10</b>	Diaphragm spring	3241024
<b>11</b>	Primary Diaphragm (N-V-T)	TKISM045N Neoprene
		TKISM045V Viton
		TKISM045T Low temperature
<b>12</b>	Valve body	1251400

TFP version with built-in pilot / TFM version with remote pilot  
 V## / V## = 24 Vdc - 24 Vac - 115 Vac - 230 Vac

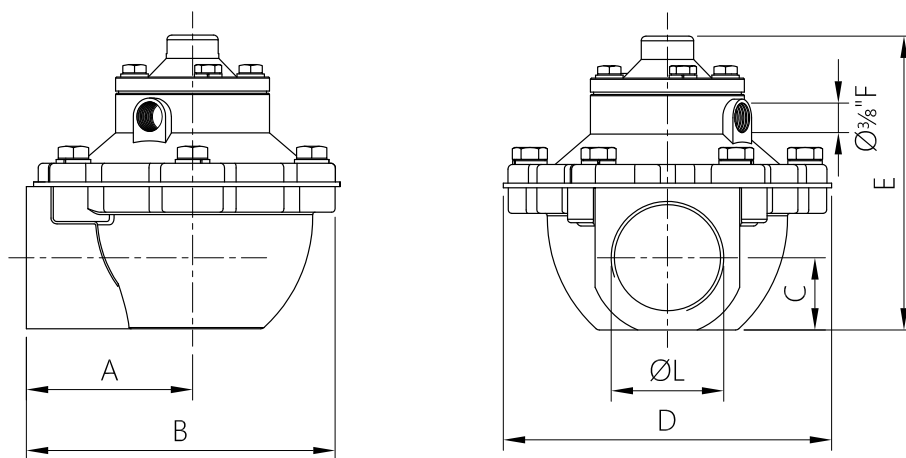


# TF SERIES - Ø 1 ½" - OVERALL DIMENSIONS

TF045(N-V-T)P



TF045(N-V-T)M



MODEL	Ø L (nom)	A	B	C	D	E	Weight (kg)
TF045(N-V-T)P	1 ½"	71.3	135	31	140	~188	1.6
TF045(N-V-T)M	1 ½"	71.3	135	31	140	~122	1.4